

Ground Water Rule: Corrective Actions

Mark Mikol
Drinking Water Protection Team

Groundwater Corrective Actions

§290.116(a)-(f)

TCEQ will require a
Corrective Action when a
fecal indicator is found in the
ground water source

Fecal Indicators

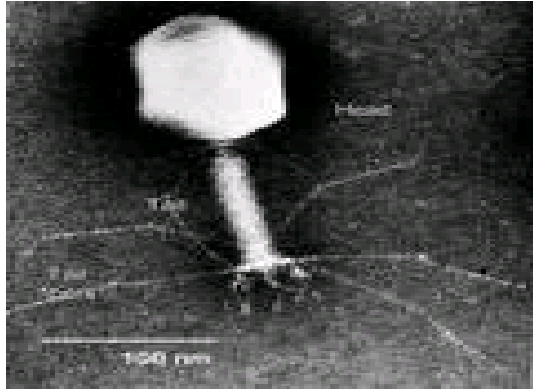


Fig.1



Fig. 2

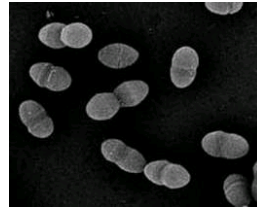


Fig. 3

Source Sample Invalidation

§290.109(d)(2)

- PWS may obtain invalidation if:
 - Lab identifies improper sample or analysis
 - TCEQ determines positive fecal indicator result is not related to source water quality
- If sample is invalidated, replacement sample must be collected within 24 hours

Fecal Positive Source Sample

- TCEQ will require a 24 hour public notification if a positive fecal indicator sample is collected
 - Providers must notify all Receivers
- Fecal-positive source samples will also require corrective action

Corrective Actions

§290.116(b)(5)

PWS with Significant Deficiency or source water fecal indicator positive must implement one of the following

1. Correct all significant deficiencies
2. Provide alternate source of water
3. Eliminate source of contamination
4. Provide 4-log treatment of viruses

TCEQ Additional Corrective Actions

- Well disinfection in accordance with AWWA procedures
- A State-specified period of Source Monitoring

Compliance Monitoring Chemical Disinfection

- PWS with population > 3,300
 - Must continuously monitor disinfectant
 - Must maintain TCEQ-specified residual
- PWS with population < 3,300
 - Must monitor disinfectant daily
 - Must maintain TCEQ-specified residual

Reporting for PWS

- Must notify TCEQ if fails to meet 4-log treatment of viruses by next day
- Must notify TCEQ within 30 days of completion of Corrective Action

Treatment Technique Violations

- Corrective Action not completed in 120 days
- Not in compliance with Corrective Action plan and schedule
- Fails to maintain 4-log treatment of viruses

Source Water Assessment Monitoring Option

- If directed by TCEQ, PWS would collect 12 consecutive monthly source samples
- Provides a proactive approach to Source Monitoring

Corrective Action Compliance

PWS must complete or be in compliance with TCEQ-approved corrective action plan and schedule within 120 days of receiving written notice

24-Hour PN Required

- When a ground water PWS collects a source water sample that is fecal indicator positive (and is not invalidated)
 - Includes results from:
 - Provider PWS
 - Triggered Source Water Monitoring
 - Source Water Assessment Monitoring

30-Day PN Required

- When a GW PWS fails to:
 - Take corrective action
 - Fecal indicator positive
 - Significant deficiency
 - Comply with a TCEQ-approved schedule and plan
 - Maintain 4-log treatment of viruses

90-Day PN Required

- When a GW PWS fails to:
 - Conduct triggered source water monitoring
 - Conduct assessment source water monitoring
 - Conduct monitoring to demonstrate compliance with 4-log treatment requirement

CCR Notice Required

- When a GW PWS has:
 - An uncorrected significant deficiency
 - Corrected significant deficiency
 - Fecal indicator positive source water sample